



Thermotech

**THERMOTECH LW CC
PIPE CUTTING AND
BEVELING MACHINE**

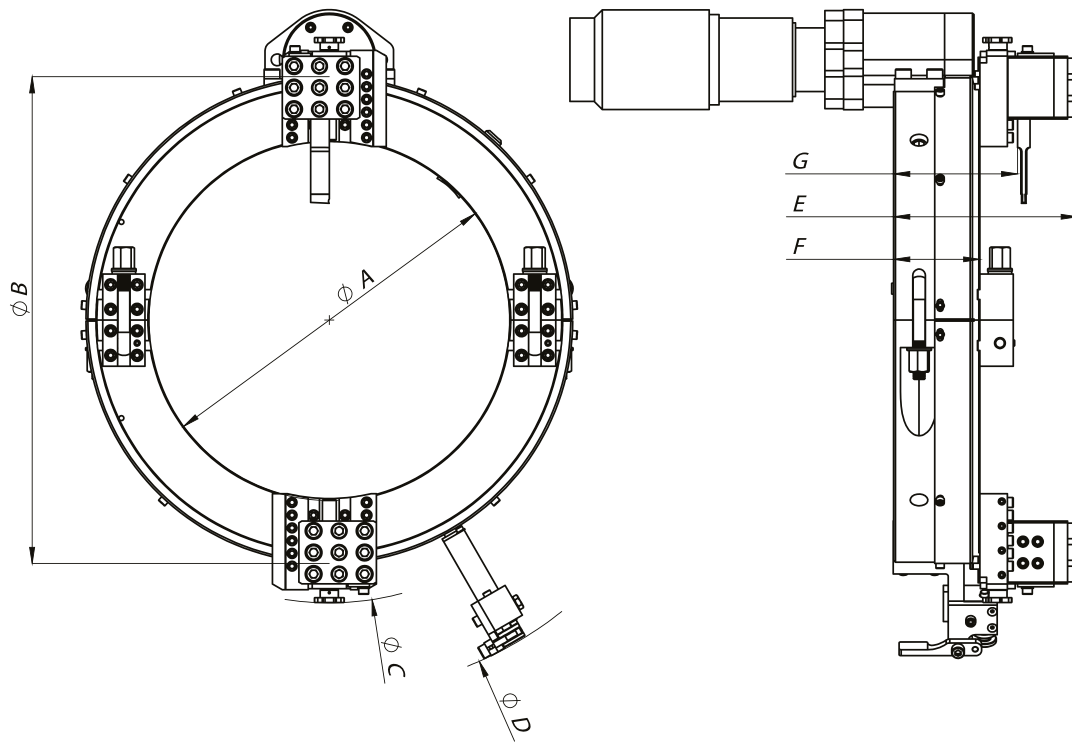


- Quick setup and machining
- Very low weight and compact design
- Perfect weld preparation without heat affected zone
- Modular design

Thermotech LW cold cutter is a pipe cutting and bevelling machine with a split-frame design that makes it possible to clamp it around in-line pipes. Cutting is done cold so that there is no heat affected zone. LW cold cutter can be powered with either a pneumatic, hydraulic or electric motor.

Thermotech LW CC is commonly used in oil&gas, power, nuclear and process industries where there are high quality and safety requirements for pipe cutting and bevelling.





MACHINE DIMENSIONS

		A	B	C	D	E	F	G	Weight	Pipe OD	
		∅ mm	∅ mm	∅ mm	∅ mm	mm	mm	mm		kg	Min. mm
LW	3-6	182	319	404	545	188	88,5	127	23	60	176
LW	4-8	232	366	448	590	188	88,5	127	24	80	226
LW	5-10	286	420	498	644	188	88,5	127	28	107	280
LW	6-12	340	470	522	694	188	88,5	127	31	136	333
LW	8-14	368	496	524	719	188	88,5	127	35	187	361
LW	10-16	421	550	634	774	188	88,5	127	37	239	414
LW	12-18	470	604	682	827	188	88,5	127	42	288	463
LW	14-20	525	655	738	878	188	88,5	127	44	319	518
LW	18-24	625	759	840	981	188	88,5	127	54	422	621
LW	24-30	775	920	992	1143	188	88,5	127	70	579	773
LW	30-36	928	1068	1144	1294	188	88,5	127	78	730	923
LW	36-43	1105	1250	1322	1472	188	88,5	127	93	888	1103
LW	40-48	1245	1420	1462	1645	194	95	134	138	994	1235

Pneumatic Drive

Thermotech machines are equipped with world leading air motors. They are powerful and extremely reliable and are an excellent solution for powering a cold cutting machine. As a standard machines up to LW10 have 1.7kW motor. Machines up to LW48 have 3kW motors.

Hydraulic Drive

Hydraulic motors provide the most powerful and constant drive for the machines. Hydraulic motors supplied with the LW CCs have 8kW power.

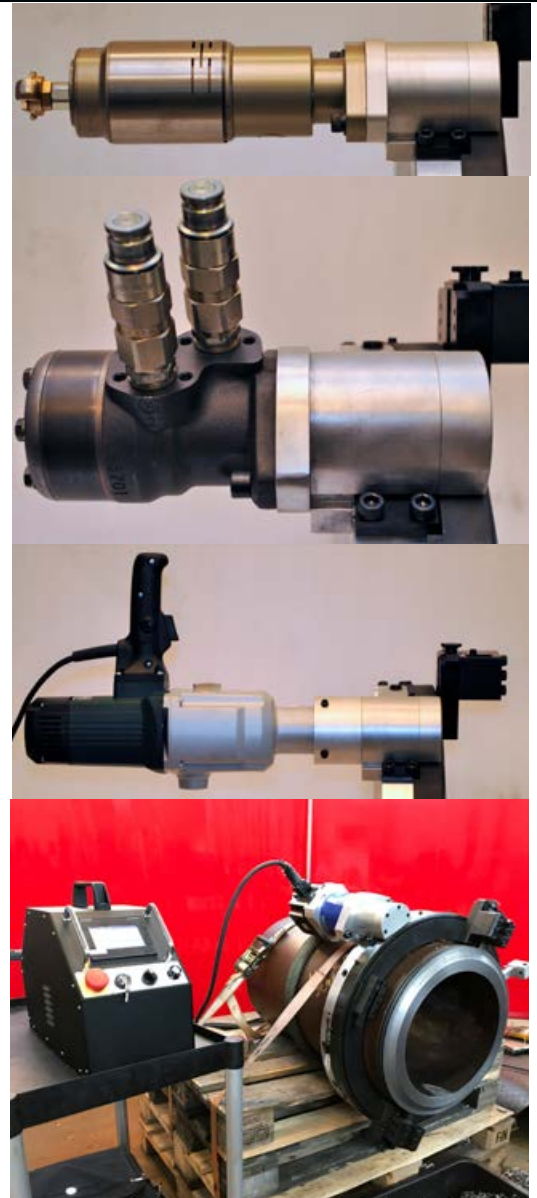
Electric Drive

Powered with strong 1.8kW electric motor, Thermotech Electric Drive offers the utmost flexibility by requiring only standard 230v power.

Servo Drive

Thermotech Servo Drive produces high and stable torque throughout the revolution range. It is extremely flexible solution requiring only standard power. Smaller 1.5kw motor requires 230v one phase, and 3.3kW motor requires 400v three phase power.

From the touchscreen display the operator can monitor the torque, speed and current and achieve the optimum cutting performance. As an additional benefit the motors are also silent, increasing the operator comfort.

**STANDARD EQUIPMENT****Toolslides**

Thermotech Tool slides are made to be durable and extremely reliable and are quickly adjusted. Standard range includes four feed lengths; 10mm, 35mm, 60mm and 100mm.

Thermotech machines are shipped with all the equipment you need for using the machine; you only need to provide the power. Convenient hand tool set has all required tooling needed for operating the machine. Including one set of cutting tools.

Thermotech machines are delivered in durable and extremely light weight aluminum cases, which are easy to handle and can be stacked up securely.



Thermotech LW Cold Cutter is often used in challenging environments, where complicated machining operations must be executed. To support the operators, we have developed wide range of accessories for the machine that make even most complicated tasks possible.

ID machining

Thermotech Counterbore module TCB is designed for counterboring holes, or machining the inside surface of a pipe. It makes it easy to cut the pipe and create required weld profile also to the inside surface, with the same set up. Standard versions of TCB have feed lengths of 90mm and 200mm. It can be adjusted to angles from 0 to 25 degrees.

OD Machining

External Turning Module ETM is useful for machining outside surface of the pipe. For example removing coating or welding. ETM has feed of 200mm.

Flange Facing Bridge

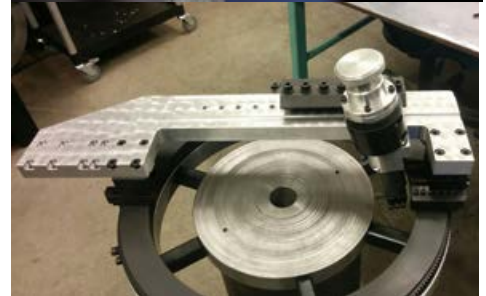
For machining the surface of a flange or end of a thick pipe, Thermotech Flange Facing Bridge is quick and easy to use add on. Light weight and modular design uses the TCB module for the axial feed. It is quick to mount on top of the standard toolslide.

Deck Cutting Kit

Cutting large holes thru a metal decking on a platform or a vessel can be a challenging task. Thermotech Deck Cutting Kit offers solution for this task. Using magnets for clamping the machine to the steel deck makes it possible to cut a hole without damaging the surrounding area.

Springloaded Toolslide

Thermotech Springloaded Toolslide LWS is perfect for machining out-of-round pipes. Especially suitable for pipes with thin wall it makes the bevelling of oval pipes easy and accurate.



Extended Toolside

Thermotech Extended Tool slide LWX is created for cases where there is a need to cut a pipe very close to a flange but there is no space to mount the machine directly on the pipe. Extended Tool slide provides the extra reach required making it possible to mount the LW CC on the flange and cut the pipe.



Low Profile Toolside

Using the Low profile Toolside it is possible to cut a pipe with extremely low axial space requirement when flange or other obstacles make it impossible to use the standard toolslides.



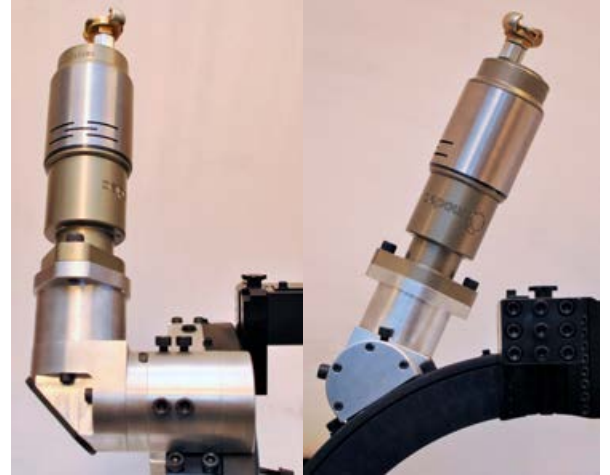
ID Mounting Kit

With the ID mounting kit it is possible to cut and bevel tanks and pipes from inside-out using the LW Cold Cutter. Machine is clamped inside the pipe with special mounting feet and the tool movement is reversed so that the cutting movement is directed outwards.



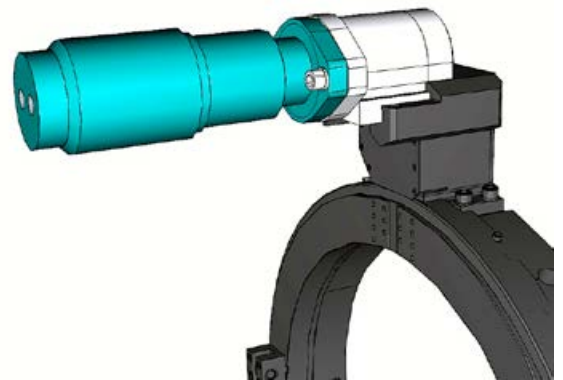
Adjustable Right Angle Gear

This gear offers the utmost flexibility for confined spaces. Motor is mounted to 90degree angle and the gear allows the motor to be turned freely to any angle. Gear fits to both pneumatic and hydraulic motors.



Front Gear

Thermotech Front Gear makes it possible to mount the motor facing the opposite direction. All standard Thermotech gears fit directly on to the front gear, so it is not required to dismantle the drive assembly.



TOOLING

High quality tooling for the Thermotech machines ensures the best cutting and bevelling results. Tools are made from high grade tool steels with 8% cobalt content.

Wide range of standard tooling is available in stock and additionally custom made tooling can be ordered for specific requirements.





Thermotech

www.thermotech-as.no
www.thermotech.ee

THERMOTECH BALTIC OÜ

Sinikivi tee 12
75306 Lehmja, Rae vald
Estonia

+372 6003704
info@thermotech.ee

THERMOTECH AS

Kvalamarka 23
5514 Haugesund
Norway

+47 52700080
post@thermotech-as.no